



2024 Products and Prices



BlueStarLandscapeSupply.com

231-943-3990

customerservice@bluestarls.com



Conditions of Sale:

- All orders are to be paid for in advance of delivery without prior credit approval.
- Past-due accounts are subject to a 2% finance charge.
- Accounts 60 days past due will be placed on a C.O.D and/or prepaid terms.
- A restocking fee of 20% will be assessed for in-stock material if ordered or placed on hold, then cancelled by the customer.
- Please add 6% Michigan sales tax or send tax exempt form before purchase.
- Discounts do not apply to delivery prices.
- Prices in this book are subject to change due to rising costs.
- Coverage on all material is approximate.
- Not all products in Price Book may be inventoried; please call in advance.
- All sales are final. No returns or refunds.



Table of Contents:

Decorative Stone.....	1
Flagstone.....	2
Pre-Cut Steps.....	3
Outcroppings.....	3
Oversized Stone.....	4
Wall Stone.....	4
Sand & Gravel.....	5
Drain Material.....	5
Landscape Bark & Fabric.....	6
Edging.....	7
Fire Pits.....	8
Versa-Lok.....	9
Pyzique.....	10
Oaks.....	11-12
Techo-Bloc.....	13-19
Ed's Concrete Products.....	20
High Format.....	21-24
Delivery Rates.....	25





Decorative Stone

Decorative Stone:	Lbs./Yard:	SF Coverage:	Price/Ton:
Adair	3050	105	\$128.00
Aggregate, Canadian	2700	120	\$114.00
Aggregate, Natural 1"	2700	120	\$68.00
Aggregate, Red River 1"	2620	124	\$176.00
Blush Mtn. .375" - 1"	2400	135	\$162.00
Blush Mtn. 1.5" - 2"	2400	135	\$162.00
Canadian Path Stone .375"	2400	135	\$132.00
Cascadia	2700	120	\$80.00
Cocoa Chips 1"	2430	135	\$292.00
Crushed Pea Stone	2700	120	\$94.00
Decomposed Granite	2400	135	\$360.00
Dublin	2400	135	\$65.00
Hayden	2500	125	\$55.00
Hudson	2700	120	\$94.00
Marble Crystal 1.5" - 2"	2500	129	\$283.00
Mayfield	2500	120	\$99.00
Millstone	2400	135	\$151.00
Oak Creek	3100	105	\$256.00
Osage	2700	120	\$80.00
Pea Stone, Canadian .375"	2700	120	\$108.00
Pea Stone, Michigan .375"	2600	120	\$65.00
Potato Stone 2" - 4"	2790	50	\$130.00
River Rock, Michigan 1.5" - 2"	2500	120	\$69.00
River Rock, Red River 1.5" - 2"	2730	120	\$176.00
Rockford Red	2700	120	\$102.00
Slate Gray 1.5" - 2"	2500	129	\$275.00
Spanish Tile	2050	158	\$236.00
Tilden	2700	120	\$70.00
Turquoise	2250	125	.40¢/lb.
Walnut Nuggets	2420	134	\$227.00

***Decorative stone SF coverage is based on a depth of 1.5" - 2".**

Visit our Decorative Stone page @bluestarlandscapesupply.com for pictures



Flagstone

Irregular Flagstone:	Thickness:	SF Coverage:	Price/Ton:
Chilton Shims	.75" - 1"	80 - 100	\$230.00
Chilton Steppers	1.5" - 2"	80 - 90	\$424.00
Chilton Premium Steppers	1.5" - 2"	80 - 90	\$635.00
Chilton Large	2.5" - 3"	60 - 80	\$660.00
Fond du Lac Shims	.75" - 1"	80 - 100	\$230.00
Fond du Lac Steppers	1.5" - 2"	80 - 90	\$443.00
Fond du Lac Large	1" - 2"	80 - 100	\$995.00
Fond du Lac Silver Large	1" - 2"	65 - 85	\$995.00
Idaho	1" - 1.5"	100 - 120	\$553.00
Idaho Premium	.75" - 1.25"	120 - 140	\$645.00
NY Blue Tumbled	2"	90 - 100	\$353.00
NY Full Color	1.5" - 2"	90 - 100	\$489.00
NY Full Color Thin	1" - 1.5"	100 - 120	\$463.00
NY Lilac	1.5" - 2"	90 - 100	\$526.00
NY Blue	1.5" - 2"	90 - 100	\$953.00
NY Full Color Thermal	1.5" +/-	100 - 120	\$969.00
NY Blue Thermal	1.5" +/-	100 - 120	\$995.00
West Mountain Tumbled	2"	90 - 100	\$620.00
West Mountain Thermal	1.5" +/-	100 - 120	\$1218.00

Flagstone Tiles:	Thickness:	Size:	Price/SF:
NY Full Color	1.5" - 2"	Mixed Size	\$9.60
NY Full Color Thermal	1.5" +/-	Mixed Size	\$13.60
NY Blue Thermal	1.5" +/-	Mixed Size	\$16.10
West Mountain Thermal	1.5" +/-	Mixed Size	\$23.10

Flagstone Terms:

Shims: Small pieces (5 - 10" in diameter)

Steppers: Medium pieces (10 - 14" in diameter)

Large Flag: Large pieces (16 - 36"+ in diameter)

NY Full Color Tiles: also available per piece. Sold at .50¢ per pound.

Visit our Flagstone page @bluestarlandscapesupply.com for pictures



Pre-Cut Steps & Outcroppings

Pre-Cut Steps:

Dimensions:

Price/Each:

3' Chilton	18" x 36"	\$205.00
4' Chilton	18" x 48"	\$300.00
3' Fond du Lac Silver	18" x 36"	\$220.00
4' Fond du Lac Silver	18" x 48"	\$325.00
3' New York	18" x 36"	\$280.00
4' New York	18" x 48"	\$375.00
3' New York	24" x 36"	\$375.00
3' Midnight	18" x 36"	\$443.00
3' Sunrise	18" x 36"	\$247.00
3' Greige	18" x 36"	\$264.00
4' Greige	18" x 48"	\$386.00

Midnight Boulder Step

Irregular

\$927.00/Ton

Outcroppings:

Thickness:

Price/Ton:

Chilton Premium Treads	6"- 9"	\$497.00
Fond du Lac Silver Treads	6"- 9"	\$538.00
NY Full Color	6"- 8"	\$440.00

*These stones can be used for both large stairway steps and landscape walls.





Oversized Stone & Wall Stone

Dimensional Wall Stone:

	Thickness:	Price/Ton:
Chilton 6"	3" - 4"	\$470.00
Chilton 8"	3" - 4"	\$383.00
Fond du Lac 6"	3" - 4"	\$483.00
Fond du Lac 8"	3" - 4"	\$427.00
Chilton 8" Sawed	4"	\$587.00
Fond du Lac Silver 8" Sawed	4"	\$645.00
NY Blue 8"	3" - 6"	\$932.00/Pallet

Oversized Stone:

	Size:	Price/Ton:
Natural Cobble	2" - 4"	\$112.00
Smooth Cobble	4" - 8"	\$142.00
Fieldstone	6" - 15"	\$140.00
Boulders	12" - 18"	\$136.00
Boulders	18" - 24"	\$148.00
Boulders	24"+	\$186.00
Mixed Decorative Boulders	8" - 16"	.40¢/lb.
Turquoise Boulders		.40¢/lb.
Blush Mountain Boulders		.40¢/lb.
Midnight Boulder Cut-Offs		\$434.00
Pennsylvania Fieldstone		\$498.00/Pallet
Pennsylvania Creek Flats		\$585.00/Pallet

Wall Stone Coverage

1 ton 6" laid horizontally: approximately 30 Face Feet
 1 ton 8" laid horizontally: approximately 20 Face Feet

Estimating Boulder Weights

12" x 12" fieldstone weighs 80 - 100 lbs.
 1 cubic yard of fieldstone weighs approximately 2200 lbs.
 30" x 30" x 30" granite boulder weighs 1 ton.



Sand & Gravel

Sand & Gravel:	Lbs./Yard:	SF Coverage:	Price/Ton:
Diamond Dust	2350	140	\$35.50
Masonry Sand	2670	120	\$35.50
Beach Sand	2600	120	\$32.00
Road Gravel	2950	110	\$24.50
Screened Top Soil	2600	N/A	\$33.50
6AA Crushed Stone	2320	160	\$31.00
10A Drain Stone	2510	128	\$33.50
25A Special	2540	135	\$35.00
Stonecrete (Afton Stone)	2700	125	\$56.00
34R Pea Stone	2350	127	\$26.00
1/4 Chip	2080	150	\$34.00
Screened Fill Sand	2675	120	\$20.00
25A Crushed	2350	135	\$34.00

Drain Material

12" x 12" Catch Basin	\$55.00
4" x 10' Perf. Pipe	\$10.25
4" x 10' Solid Pipe	\$10.25
4" 90 Degree Elbow	\$10.50
4" Emitter with Elbow	\$39.00
4" Straight T	\$7.50
4" Snap Coupling	\$5.00
4" Y Fitting	\$14.00
4" Round Grate	\$6.00
Small Downspout	\$8.00
Large Downspout	\$8.00
Sox 4" x 100' Roll	\$40.00
Sox 10' Package	\$5.00
Sox 20' Package	\$9.00
Sandbag Bundle (100 per bundle)	\$30.00
Sandbags	.30¢



Landscape Bark

Landscape Bark:	Lbs./Scoop:	Price/Scoop:
Cedar	360	\$37.50
Hardwood	660	\$28.50
Red Pine	490	\$40.75
Wood Chips	490	\$29.75
Black Dyed	600	\$40.00
Brown Dyed	600	\$40.00
Red Dyed	600	\$40.00

***Approximately 150 SF coverage per scoop.
One scoop is approximately one yard.**

Landscape Fabric:	Size:	Price:
Premium Grade	3' x 50'	\$16.00
Commercial Grade	3' x 100'	\$33.00
Commercial Grade	4' x 100'	\$44.00
Commercial Grade	4' x 300'	\$99.00
Commercial Grade	6' x 300'	\$168.00
Silt Fence	3' x 100'	\$35.00
Fabric Knives		\$2.50

Landscape Pins:	Price:
30 Pin Pack	\$5.00
75 Pin Pack	\$9.00
1000 Pin Pack	\$72.00



Edging

Poly Edging (5" x 20')

Price/Piece:

Elite Edge	\$17.00
Connector Kit	\$5.00
90 Degree Corner	\$4.50

Aluminum Edging:

8' Mill Finish	\$20.60
8' Bronze Finish	\$24.60
8' Black Finish	\$24.60
8' Green Finish	\$24.60
16' Mill Finish	\$39.40
16' Bronze Finish	\$47.40
16' Black Finish	\$47.40
16' Green Finish	\$47.40
Stakes Mill Finish	\$2.00
Stakes Any Color Finish	\$2.50

Brick Edging:

Poly Paver Restraint	\$17.75
Aluminum Brick Edging	\$17.75
Anchor Nails	.60¢/each
Anchor Nails Box	\$130.00

Natural Edging:

Price/Ton:

Chilton Border Edge	\$550.00
Fond du Lac Silver Border Edge	\$559.00



Fire Pits

Fire Pit Inserts:

Square Insert	\$336.00
Round Insert	\$268.00
48" Round Insert	\$250.00
48" Square Insert	\$532.00

Fire Pit Accessories:

Grill Grate Attachment	\$152.00
Fire Poker	\$49.00
Cover for Insert	\$157.00

Fire Pit Rings:

30" Ring	\$39.00
36" Ring	\$48.00
42" Ring	\$58.00
48" Ring	\$68.00

Fire Blocks:

Standard Laredo - Square	12/Layer	\$5.92/Block
Standard Laredo - Large Square	20/Layer	\$5.92/Block
Tapered Laredo - Round	17/Layer	\$3.88/Block
Natural Pyzique - Round	14/Layer	\$1.95/Block
Natural Pyzique Tumbled - Round	14/Layer	\$3.99/Block
Colored Pyzique - Round	14/Layer	\$2.33/Block
Colored Pyzique Tumbled - Round	14/Layer	\$4.31/Block



**THE
CONCRETE
SERVICE
INC.**

Versa-Lok

Standard Pricing:

Natural Block - \$7.04

Colored Block - \$7.59

Natural Cap - \$5.46

Colored Cap - \$5.85

Earth Blend

Charcoal Blend

Buckskin

Antique

Natural



Tumbled Pricing:

Natural Block - \$9.87

Colored Block - \$10.71

Natural Cap - \$9.87

Colored Cap - \$10.71



Accessory Pricing:

Versa-Pins (2 per block) - .27¢/each

Versa-Grid 3.0 - \$2.58/LF

Versa-Lifter (Deposit or Purchase) - \$89.95



Versa-Lok Specifications:

16" (Front) x 14" (Back) x 6" (Height) x 12" (Depth)

.67 Face Feet per block

82 Lbs. per block

48 block per pallet

Pallet weight: 3936 Lbs.

Versa-Cap Specifications:

16" (Front) x 16" (Back) x 3.625" (Height) x 12" (Depth)

.40 Face Feet per cap

50 Lbs. per cap

96 cap per pallet

Pallet weight: 4800 Lbs.

Pyzique

Standard Pricing:

Natural Block - \$1.95

Colored Block - \$2.33

Tumbled Pricing:

Natural Block - \$3.99

Colored Block - \$4.31

Earth Blend

Charcoal Blend

Buckskin

Antique

Natural



- Reversible trapezoidal shape.
- One wall unit creates wall, corner, and cap.



Pyzique Specifications:

11" (Front) x 7" (Back) x 4" (Height) x 9" (Depth)

.31 Face Feet per block

25 Lbs. per block

150 block per pallet

Pallet weight: 3750 Lbs.

Product	UofM	UofM/ Pallet	Price/Unit	Price/Pallet
Pavers				
Classic 60mm 4x8	SF	106	\$6.20	\$657.20
Classic 60mm 4x8 per layer	SF		\$109.74	
Colonnade 6x9	SF	105	\$6.49	\$681.45
Colonnade 6x9 per layer	SF		\$85.02	
Colonnade 9x12	SF	104	\$6.49	\$674.96
Colonnade 9x12 per layer	SF		\$168.74	
Colonnade 9x9	SF	98	\$6.49	\$636.02
Colonnade 9x9 per layer	SF		\$127.20	
Colonnade Combo	SF	104	\$6.49	\$674.96
Colonnade Combo per layer	SF		\$84.37	
Eterna 100mm	SF	64.6	\$16.27	\$1,051.04
Strassa 60mm	SF	104.7	\$8.19	\$857.49
Market 4x8 60mm	SF	69.8	\$11.60	\$809.68
Molina Combo 60mm	SF	93	\$8.00	\$744.00
Molina 6x12 60mm	SF	93	\$8.00	\$744.00
Molina 12x24 60mm	SF	93	\$8.00	\$744.00
Molina 24x24 60mm	SF	77.5	\$9.12	\$706.80
Molina 60mm - Ferro Finish - 6x12	SF	93	\$11.13	\$1,035.09
Molina Combo 80mm	SF	69.8	\$11.44	\$798.51
Molina 6x12 80mm	SF	69.8	\$11.44	\$798.51
Molina 12x24 80mm	SF	69.8	\$11.44	\$798.51
Molina 80mm - Ferro Finish - 6x12	SF	69.8	\$15.87	\$1,107.73
Enviro Midori 80mm	SF	74.4	\$7.88	\$586.27
Nueva Paver Small Rectangle 80mm	SF	77.5	\$9.02	\$699.05
Nueva Paver Random Bundle 80mm	SF	77.5	\$9.02	\$699.05
Nueva Paver 16x32 80mm	SF	83	\$9.72	\$806.76
Villanova 80mm	SF	76.5	\$9.02	\$690.03
Rialto Random Bundle 60mm	SF	103.4	\$7.72	\$798.25
Rialto Rectangle 8x16 60mm	SF	103.4	\$7.72	\$798.25
Rialto Rectangle 80mm 8x16	SF	77.5	\$9.02	\$699.05
Rialto Random 80mm	SF	77.5	\$9.02	\$699.05
Rialto Rectangle 16x24 Stone 80mm	SF	77.5	\$9.02	\$699.05
Ridgefield Plus 8x12 Stone	SF	104	\$6.76	\$703.04
Ridgefield Plus Large Combo 70mm	SF	93	\$6.76	\$628.68
Ridgefield Smooth 8x12	SF	104	\$6.76	\$703.04
Ridgefield Smooth Large Combo	SF	93	\$6.76	\$628.68
Slabs				
Nueva Random 60 mm	SF	103.4	\$7.72	\$798.25
Nueva Random 60mm Champagne Layer	SF		\$99.59	
Nueva Small Rectangle 60 mm	SF	103.4	\$7.72	\$798.25
Nueva XL Slab 60mm	SF	116.25	\$7.85	\$912.56

Product	UofM	UofM/ Pallet	Price/Unit	Price/Pallet
Walls / Copings				
Cassina 70mm	EA	78	\$7.88	\$614.64
Gardenia Linear	EA	32	\$16.51	\$528.32
Gardenia Linear Corner	EA	64	\$9.90	\$633.60
Laredo Smooth	EA	84	\$5.98	\$502.32
Laredo Standard	EA	100	\$5.92	\$592.00
Laredo Standard Onyx	EA	100	\$5.92	\$592.00
Laredo Tapered	EA	150	\$3.88	\$582.00
Laredo Tapered Onyx	EA	150	\$3.88	\$582.00
Modan Combo	SF	28.1	\$26.04	\$731.72
Modan Linear Unit	EA	48	\$10.20	\$489.60
Modeco One	EA	180	\$3.88	\$698.40
Nueva 150 Combo	SF	26	\$23.36	\$607.36
Nueva 75 Combo	SF	19.5	\$23.66	\$461.37
Nueva Coping	EA	24	\$14.25	\$342.00
Oasis	EA	36	\$20.33	\$731.88
Ortana - Standard	EA	60	\$8.32	\$499.20
Ortana - Tapered	EA	60	\$8.14	\$488.40
Ortana 1' Coping	EA	72	\$7.24	\$521.28
Ortana 2' Coping	EA	24	\$14.60	\$350.40
Ortana Corner	EA	24	\$10.08	\$241.92
Protterra Smooth Standard (Natural)	EA	9	\$82.44	\$741.96
Protterra Smooth Standard (Colors)	EA	9	\$90.27	\$812.43
Protterra Smooth Combo/Double (Natural)	Pallet	3Std/3Dbl		\$741.96
Protterra Smooth Combo/Double (Colors)	Pallet	3Std/3Dbl		\$815.79
Protterra Smooth Triple (Natural)	EA	3	\$247.31	\$741.93
Protterra Smooth Triple (Colors)	EA	3	\$271.96	\$815.88
Protterra Smooth Coping Corner/End (Natural)	EA	6	\$124.97	\$749.82
Protterra Smooth Coping Corner/End (Colors)	EA	6	\$129.15	\$774.90
Protterra Smooth Corner (Natural)	EA	9	\$113.23	\$1,019.07
Protterra Smooth Corner (Corner)	EA	9	\$123.45	\$1,111.05
Protterra Smooth Coping - Step (Natural)	EA	6	\$104.21	\$625.26
Protterra Smooth Coping - Step (Colors)	EA	6	\$114.68	\$688.08
Protterra Split Standard (Natural)	EA	9	\$82.44	\$741.96
Protterra Split Standard (Colors)	EA	9	\$90.67	\$816.03
Protterra Split Combo/Double (Natural)	Pallet	3Std/3Dbl		\$741.96
Protterra Split Combo/Double (Colors)	Pallet	3Std/3Dbl		\$815.79
Protterra Split Coping Corner/End (Natural)	EA	6	\$123.39	\$740.34
Protterra Split Coping Corner/End (Colors)	EA	6	\$127.56	\$765.36
Protterra Split Corner (Natural)	EA	9	\$111.95	\$1,007.55
Protterra Split Corner (Colors)	EA	9	\$122.17	\$1,099.53
Protterra Split Coping - Step (Natural)	EA	6	\$104.41	\$626.46
Protterra Split Coping - Step (Colors)	EA	6	\$114.68	\$688.08
Curbs / Steps				
Fronterra Curb	EA	108	\$7.92	\$855.36
Nueva Curb	EA	64	\$14.11	\$903.04
Nueva Step	EA	4	\$119.71	\$478.84

Type	Product Name	Unit	Pallet Weight	Units per pallet	Unit Price	Pallet Price
SLB	ABERDEEN, 20X20-10, KLEANBLOC	SF	1900	70.83	14.32	1,014.29
SLB	ABERDEEN, 30X10, KLEANBLOC	SF	1900	70.83	14.32	1,014.29
SLB	ABERDEEN, 30X20, KLEANBLOC	SF	1900	70.83	14.32	1,014.29
SLB	ABERDEEN, 30X30, KLEANBLOC	SF	2820	106.25	16.22	1,723.80
SLB	BLU 60 MM, SLATE	SF	3192	116.82	6.69	781.29
SLB	BLU 60 MM, SMOOTH, ONYX BLACK	SF	3192	116.82	7.25	846.71
SLB	BLU 60 MM, SMOOTH	SF	3192	116.82	7.31	854.19
SLB	BLU 60 MM HD ² , SLATE	SF	3192	116.82	7.90	923.35
SLB	BLU 60 MM HD ² , SMOOTH, ONYX BLACK	SF	3192	116.82	8.59	1,003.72
SLB	BLU 60 MM HD ² , SMOOTH	SF	3192	116.82	8.59	1,003.72
SLB	BLU 60 MM, POLISHED	SF	3192	116.82	14.03	1,639.22
SLB	BLU 60 MM, POLISHED, ONYX BLACK	SF	3192	116.82	14.03	1,639.22
PAV	BLU 60 MM, 6X13, SLATE, ONYX BLACK	SF	3171	116.05	7.25	841.13
PAV	BLU 60 MM, 6X13, SLATE	SF	3171	116.05	7.25	841.13
SLB	BLU 60 MM, 6X13, SMOOTH, ONYX BLACK	SF	3171	116.05	7.25	841.13
SLB	BLU 60 MM, 6X13, SMOOTH	SF	3171	116.05	7.25	841.13
PAV	BLU 60 MM HD ² , 6X13, SLATE	SF	3171	116.05	7.90	917.26
PAV	BLU 60 MM HD ² , 6X13, SLATE, ONYX BLACK	SF	3171	116.05	8.59	997.10
SLB	BLU 60 MM HD ² , 6X13, SMOOTH, ONYX BLACK	SF	3171	116.05	8.59	997.10
SLB	BLU 60 MM HD ² , 6X13, SMOOTH	SF	3171	116.05	8.59	997.10
SLB	BLU GRANDE, SLATE [10 ROWS]	SF	2452	87.91	7.78	683.59
SLB	BLU GRANDE, SMOOTH [10 ROWS]	SF	2452	87.91	8.43	741.26
SLB	BLU GRANDE HD ² , SLATE	SF	2698	96.71	9.52	920.68
SLB	BLU GRANDE HD ² , SMOOTH	SF	2698	96.71	10.18	984.12
SLB	BLU GRANDE, POLISHED [10 ROWS]	SF	2452	87.91	15.20	1,336.23
SLB	BOREALIS SLAB, 30X5, KLEANBLOC	PCS	1936	68	17.98	1,222.91
SLB	BOREALIS SLAB, 30X10, KLEANBLOC	PCS	1920	34	33.95	1,154.37
SLB	BOREALIS STEPPING STONE	PCS	1490	16	50.78	812.54
SLB	EVEREST HD ² , 250X250, SLATE	SF	2547	88.8	12.85	1,140.90
SLB	EVEREST HD ² , 250X500, SLATE	SF	2547	88.8	12.85	1,140.90
SLB	EVEREST HD ² , 500X500, SLATE	SF	3383	118.4	15.47	1,831.88
SLB	HEXA 60 HD ² , SMOOTH, ONYX BLACK	SF	2694	96.55	11.28	1,089.08
SLB	HEXA 60 HD ² , SMOOTH	SF	2694	96.55	11.28	1,089.08
SLB	INCA HD ² , SLATE	SF	1640	66.5	12.11	805.45
SLB	MAYA STEPPING STONE, SLATE	PCS	1587	17	48.38	822.53
SLB	OCEAN GRANDE HD ²	SF	2698	96.71	12.14	1,174.45
SLB	PACIFIC SLAB, SMOOTH	SF	2541	173.6	5.71	991.60
SLB	PARA HD ² , 250X500, SMOOTH, ONYX BLACK	SF	3295	118.4	9.54	1,129.06
SLB	PARA HD ² , 250X500, SMOOTH	SF	3295	118.4	10.10	1,195.37
SLB	PARA HD ² , 500X500, SMOOTH	SF	3295	118.4	10.10	1,195.37
SLB	PARA HD ² , 500X500, SMOOTH, ONYX BLACK	SF	3295	118.4	9.54	1,129.06
SLB	PARA HD ² , 750X500, SMOOTH, ONYX BLACK	SF	2480	88.8	12.13	1,076.97
SLB	PARA HD ² , 750X500, SMOOTH	SF	2480	88.8	12.69	1,126.69
SLB	TRAVERTINA RAW SLAB, 20X20 20X10, KLEANBLOC	SF	1835	70.83	15.39	1,090.22
SLB	TRAVERTINA RAW SLAB, 20X30, KLEANBLOC	SF	1841	70.83	15.41	1,091.35
SLB	TRAVERTINA RAW SLAB, 30X30, KLEANBLOC	SF	2782	106.25	18.45	1,960.10
SLB	INDUSTRIA 600X600X60 HD ² [11ROWS], SMOOTH, ONYX BLACK	SF	2444	85.25	9.76	832.04
SLB	INDUSTRIA 600X600X60 HD ² [11ROWS], SMOOTH	SF	2444	85.25	11.70	997.08
SLB	INDUSTRIA 600X600X60 HD ² [11ROWS], GRANITEX	SF	2444	85.25	15.30	1,303.98
SLB	INDUSTRIA 600X600X60 HD ² [11ROWS], GRANITEX, ONYX BLACK	SF	2444	85.25	15.30	1,303.98
SLB	INDUSTRIA 600X600X60 HD ² [11ROWS], POLISHED	SF	2444	85.25	16.59	1,414.47

Type	Product Name	Unit	Pallet Weight	Units per pallet	Unit Price	Pallet Price
SLB	INDUSTRIA 600X600X60 HD ² [11ROWS], POLISHED, ONYX BLACK	SF	2444	85.25	16.59	1,414.47
SLB	INDUSTRIA 600X600X60 HD ² , FLORA DAISY	SF	2532	85.25	16.59	1,414.47
SLB	INDUSTRIA 600X600X60 HD ² , FLORA DALHIA	SF	2532	85.25	16.59	1,414.47
SLB	INDUSTRIA 600X600X60 HD ² , FLORA DAPHODILE	SF	2532	85.25	16.59	1,414.47
SLB	INDUSTRIA 600X600X60 HD ² , FLORA JASMINE	SF	2532	85.25	16.59	1,414.47
SLB	INDUSTRIA 600X600X60 HD ² , FLORA LILY	SF	2532	85.25	16.59	1,414.47
SLB	INDUSTRIA 600X600X60 HD ² , FLORA ROSEMARY	SF	2532	85.25	16.59	1,414.47
PAV	ANTIKA, SMOOTH, ONYX BLACK	SF	2230	87	9.09	790.66
PAV	ANTIKA, SMOOTH	SF	2230	87	9.09	790.66
PAV	AQUA STORM PERMEABLE, SMOOTH	SF	2412	78.39	10.05	787.66
PAV	BLU 80 MM, SLATE	SF	3128	84.96	9.18	780.27
PAV	BLU 80 MM, SMOOTH, ONYX BLACK	SF	3128	84.96	10.77	914.85
PAV	BLU 80 MM, SMOOTH	SF	3128	84.96	9.84	836.01
PAV	BLU 80 MM HD ² , SLATE	SF	3128	84.96	10.59	899.90
PAV	BLU 80 MM HD ² , SMOOTH, ONYX BLACK	SF	3128	84.96	11.25	955.63
PAV	BLU 80 MM HD ² , SMOOTH	SF	3128	84.96	11.25	955.63
PAV	BLU 80 MM, POLISHED	SF	3128	84.96	15.74	1,337.61
PAV	BLU 80 MM, POLISHED, ONYX BLACK	SF	3128	84.96	15.74	1,337.61
PAV	BLU 80 MM, 6X13, SLATE, ONYX BLACK	SF	3107	84.4	10.77	908.82
PAV	BLU 80 MM, 6X13, SLATE	SF	3107	84.4	10.77	908.82
PAV	BLU 80 MM, 6X13, SMOOTH, ONYX BLACK	SF	3107	84.4	10.77	908.82
PAV	BLU 80 MM, 6X13, SMOOTH	SF	3107	84.4	10.77	908.82
PAV	BLU 80 MM HD ² , 6X13, SLATE	SF	3107	84.4	10.59	893.96
PAV	BLU 80 MM HD ² , 6X13, SLATE, ONYX BLACK	SF	3107	84.4	11.25	949.33
PAV	BLU 80 MM HD ² , 6X13, SMOOTH	SF	3107	84.4	11.25	949.33
PAV	BLU 80 MM HD ² , 6X13, SMOOTH, ONYX BLACK	SF	3107	84.4	11.25	949.33
PAV	EVA, SLATE	SF	3596	132.48	6.10	807.60
PAV	EVA, SMOOTH	SF	3596	132.48	6.10	807.60
PAV	EVA, SMOOTH, ONYX BLACK	SF	3596	132.48	6.67	883.91
PAV	LINEA SMALL RECTANGLES, SMOOTH	SF	3730	80.81	8.93	721.47
PAV	LINEA SMALL RECTANGLES, SMOOTH, ONYX BLACK	SF	3730	80.81	9.55	771.90
PAV	LINEA LARGE RECTANGLES, SMOOTH, ONYX BLACK	SF	3561	77.14	9.55	736.84
PAV	LINEA LARGE RECTANGLES, SMOOTH	SF	3561	77.14	8.93	688.71
PAV	MIKA, KLEANBLOC	SF	2998	107.63	15.42	1,660.09
PAV	MIKA, KLEANBLOC, ONYX BLACK	SF	2998	107.63	15.42	1,660.09
PAV	MISTA RANDOM PERMEABLE, SLATE	SF	3450	116.2	8.69	1,009.55
PAV	PURE PERMEABLE, BEVELED	SF	3175	90	8.91	802.08
PAV	SLEEK HD ² , SMOOTH, ONYX BLACK	SF	3550	84.59	12.48	1,055.68
PAV	SLEEK HD ² , SMOOTH	SF	3550	84.56	13.04	1,102.66
PAV	SQUADRA, [73.41 SF], SLATE, ONYX BLACK	SF	2009	73.409	11.79	865.63
PAV	SQUADRA, [73.41 SF], SLATE	SF	2009	73.409	10.83	795.16
PAV	TRAVERTINA RAW PAVER, KLEANBLOC	SF	2998	107.63	15.42	1,660.09
PAV	VALET, BASALT	SF	2577	92.31	9.04	834.48
PAV	VALET, BASALT, ONYX BLACK	SF	2577	92.31	10.00	923.10
PAV	VICTORIEN 60 MM, SMOOTH, ONYX BLACK	SF	3500	123.7	6.93	856.99
PAV	VICTORIEN 60 MM, SMOOTH	SF	3500	123.7	6.93	856.99
PAV	VILLAGIO, BEVELED, ONYX BLACK	SF	2935	117	9.31	1,089.50
PAV	VILLAGIO, BEVELED	SF	2935	117	9.31	1,089.50
PAV	WESTMOUNT HD ² , SMOOTH	SF	2949	79.36	9.73	772.01
PAV	WESTMOUNT HD ² , SMOOTH, ONYX BLACK	SF	2949	79.36	10.75	853.28
WAL-C	SKYSCRAPER WALL, BASE, SMOOTH	SF	1880	6	72.58	435.46

Type	Product Name	Unit	Pallet Weight	Units per pallet	Unit Price	Pallet Price
WAL-C	SKYSCRAPER WALL, CORNER, SMOOTH	PCS	2460	4	123.17	492.67
WAL-C	SKYSCRAPER WALL, EXTENDER, SMOOTH	PCS	1800	4	109.41	437.63
WAL-C	SKYSCRAPER WALL, MIDDLE, SMOOTH	SF	1620	6	61.02	366.14
WAL-C	SKYSCRAPER WALL, TOP, SMOOTH	SF	2100	12	45.58	547.01
WAL	BOREALIS WALL/CURB, DOUBLE SIDED	PCS	3042	16	88.51	1,416.19
WAL	BRANDON 90 MM WALL, SLATE	SF	1861	20.44	31.12	636.09
WAL	BRANDON 90 MM WALL, SLATE, ONYX BLACK	SF	1861	20.44	32.02	654.41
WAL	BRANDON 180 MM WALL, SLATE, ONYX BLACK	SF	1861	20.44	32.02	654.41
WAL	BRANDON 180 MM WALL, SLATE	SF	1861	20.44	31.12	636.09
WAL	BRANDON 90 MM CORNER/PILLAR, SLATE	PCS	1666	40	23.71	948.48
WAL	BRANDON 90 MM CORNER/PILLAR, SLATE, ONYX BLACK	PCS	1666	40	24.64	985.60
WAL	BRANDON 180 MM CORNER/PILLAR, SLATE, ONYX BLACK	PCS	1666	20	29.15	583.04
WAL	BRANDON 180 MM CORNER/PILLAR, SLATE	PCS	1666	20	28.29	565.76
WAL	FASCIA BASE UNIT	PCS	3701	66	12.96	855.36
WAL	ICONIC FASCIA WALL [42 PCS], KLEANBLOC, ONYX BLACK	PCS	1260	42	22.64	950.88
WAL	ICONIC FASCIA WALL [42 PCS], KLEANBLOC	PCS	1260	42	22.64	950.88
WAL	ICONIC FASCIA CORNER/PILLAR, KLEANBLOC, ONYX BLACK	PCS	680	24	27.38	657.02
WAL	ICONIC FASCIA CORNER/PILLAR, KLEANBLOC	PCS	680	24	27.38	657.02
WAL	ROSEMONT FASCIA WALL [42 PCS], KLEANBLOC	PCS	1260	42	22.64	950.88
WAL	ROSEMONT FASCIA CORNER/PILLAR, KLEANBLOC	PCS	680	24	27.38	657.02
WAL	STRUCTURAL BLOCK SINGLE-SIDED	PCS	2678	96	5.97	572.93
WAL	STRUCTURAL BLOCK DOUBLE-SIDED	PCS	2137	72	7.81	562.18
WAL	G-FORCE WALL, SMOOTH	PCS	2526	32	17.94	573.95
WAL	G-FORCE CORNER, SMOOTH	PCS	1753	16	26.30	420.86
WAL	GRAPHIX WALL, SMOOTH & SPLIT, ONYX BLACK	SF	2773	26.25	28.34	743.82
WAL	GRAPHIX WALL, SMOOTH & SPLIT	SF	2773	26.25	28.34	743.82
WAL	MINI-CRETA 3" WALL, ARCHITECTURAL, ONYX BLACK	SF	2442	24	26.18	628.22
WAL	MINI-CRETA 3" WALL, ARCHITECTURAL	SF	2442	24	26.18	628.22
WAL	MINI-CRETA 6" WALL, ARCHITECTURAL	SF	3053	30	24.11	723.36
WAL	MINI-CRETA PILLAR, 24X3, ARCHITECTURAL	PCS	1530	48	16.11	773.38
WAL	MINI-CRETA PILLAR, 24X6, ARCHITECTURAL	PCS	1530	24	28.08	673.92
WAL	PRESCOTT 2.25" WALL	SF	2562	27	38.70	1,045.01
WAL	PRESCOTT 2.25" CORNER/PILLAR	PCS	1819	72	21.17	1,524.10
WAL	PRESCOTT 4.5" WALL	SF	2562	27	38.70	1,045.01
WAL	PRESCOTT 4.5" CORNER/PILLAR	PCS	1819	36	26.16	941.76
WAL	RAFFINATO 90 WALL, SMOOTH	PCS	2072	64	12.03	770.05
WAL	RAFFINATO 90 PILR/CRNR/EDGE, SMOOTH	PCS	1863	48	13.70	657.41
WAL	RAFFINATO 90 WALL, POLISHED, ONYX BLACK	PCS	1942	60	18.34	1,100.16
WAL	RAFFINATO 90 WALL, POLISHED	PCS	1942	60	18.34	1,100.16
WAL	RAFFINATO 90 PILR/CRNR/EDGE, POLISHED, ONYX BLACK	PCS	1553	40	21.95	878.08
WAL	RAFFINATO 90 PILR/CRNR/EDGE, POLISHED	PCS	1553	40	21.95	878.08
WAL	RAFFINATO 180 WALL, SMOOTH	PCS	2067	32	24.10	771.07
WAL	RAFFINATO 180 WALL, SMOOTH, ONYX BLACK	PCS	2067	32	24.10	771.07
WAL	RAFFINATO 180 PILR/CRNR/EDGE, SMOOTH	PCS	1863	24	27.49	659.71
WAL	RAFFINATO 180 PILR/CRNR/EDGE, SMOOTH, ONYX BLACK	PCS	1863	24	27.49	659.71
WAL	RAFFINATO 180 WALL, POLISHED, ONYX BLACK	PCS	1938	30	36.66	1,099.68
WAL	RAFFINATO 180 WALL, POLISHED	PCS	1938	30	36.66	1,099.68
WAL	RAFFINATO 180 PILR/CRNR/EDGE, POLISHED, ONYX BLACK	PCS	1553	20	43.89	877.76
WAL	RAFFINATO 180 PILR/CRNR/EDGE, POLISHED	PCS	1553	20	43.89	877.76
WAL	ROCKA WALL/CURB	SF	1860	19.88	45.36	901.76
WAL	SEMMA WALL, DOUBLE-SIDED, SPLIT FACE	PCS	2300	40	13.33	533.12

Type	Product Name	Unit	Pallet Weight	Units per pallet	Unit Price	Pallet Price
WAL	SEMMA CORNER & PILLAR KIT, SPLIT FACE	PCS	1380	24	19.02	456.58
WAL	TRAVERTINA RAW WALL	PCS	2857	48	29.12	1,397.76
WAL	TRAVERTINA RAW CORNER & PILLAR	PCS	1495	24	31.57	757.63
PAV	DIAMOND HD ² , SMOOTH, ONYX BLACK	SF	3543	74.47	14.14	1,053.30
PAV	DIAMOND HD ² , SMOOTH	SF	3543	74.47	14.14	1,053.30
PAV	DIAMOND HD ² , GRANITEX	SF	3543	74.47	17.74	1,321.40
PAV	DIAMOND HD ² , GRANITEX, ONYX BLACK	SF	3543	74.47	17.74	1,321.40
PAV	HEXA 100 HD ² , SMOOTH, ONYX BLACK	SF	2855	61.44	15.66	962.40
PAV	HEXA 100 HD ² , SMOOTH	SF	2855	61.44	15.66	962.40
PAV	HYDRA, SMOOTH	SF	2834	62	12.18	754.91
PAV	INDUSTRIA 300X100X100 HD ² [33], SMOOTH, ONYX BLACK	SF	3412	74.59	13.90	1,037.10
PAV	INDUSTRIA 300X100X100 HD ² [33], SMOOTH	SF	3412	74.59	14.46	1,078.87
PAV	INDUSTRIA 300X100X100 HD ² [33], GRANITEX	SF	3412	74.59	17.50	1,305.62
PAV	INDUSTRIA 300X100X100 HD ² [33], GRANITEX, ONYX BLACK	SF	3412	74.59	17.50	1,305.62
PAV	INDUSTRIA 300X100X100 HD ² [33], POLISHED	SF	3412	74.59	18.30	1,365.30
PAV	INDUSTRIA 300X100X100 HD ² [33], POLISHED, ONYX BLACK	SF	3412	74.59	18.30	1,365.30
PAV	INDUSTRIA 300X150X100 HD ² , SMOOTH	SF	3357	71.2	14.66	1,043.51
PAV	INDUSTRIA 300X150X100 HD ² , SMOOTH, ONYX BLACK	SF	3357	71.2	14.10	1,003.64
PAV	INDUSTRIA 300X150X100 HD ² , GRANITEX	SF	3357	71.2	17.70	1,259.96
PAV	INDUSTRIA 300X150X100 HD ² , GRANITEX, ONYX BLACK	SF	3357	71.2	17.70	1,259.96
PAV	INDUSTRIA 300X150X100 HD ² , POLISHED	SF	3357	71.2	18.50	1,316.92
PAV	INDUSTRIA 300X150X100 HD ² , POLISHED, ONYX BLACK	SF	3357	71.2	18.50	1,316.92
PAV	INDUSTRIA 300X300X100 HD ² , SMOOTH, ONYX BLACK	SF	3832	81.38	14.10	1,147.13
PAV	INDUSTRIA 300X300X100 HD ² , SMOOTH	SF	3832	81.38	14.66	1,192.71
PAV	INDUSTRIA 300X300X100 HD ² , GRANITEX, ONYX BLACK	SF	3832	81.38	17.70	1,440.10
PAV	INDUSTRIA 300X300X100 HD ² , GRANITEX	SF	3832	81.38	17.70	1,440.10
PAV	INDUSTRIA 300X300X100 HD ² , POLISHED	SF	3832	81.38	18.50	1,505.20
PAV	INDUSTRIA 300X300X100 HD ² , POLISHED, ONYX BLACK	SF	3832	81.38	18.50	1,505.20
PAV	INDUSTRIA TACTILE 300X300X100 HD ² , SMOOTH	SF	3832	81.38	18.78	1,528.64
PAV	INDUSTRIA TACTILE 300X300X100 HD ² , SMOOTH, ONYX BLACK	SF	3832	81.38	18.22	1,483.07
PAV	INDUSTRIA 900X300X100 HD ² , SMOOTH, ONYX BLACK	SF	3821	81.38	15.62	1,270.83
PAV	INDUSTRIA 900X300X100 HD ² , SMOOTH	SF	3821	81.38	16.18	1,316.40
PAV	INDUSTRIA 900X300X100 HD ² , GRANITEX	SF	3821	81.38	19.22	1,563.80
PAV	INDUSTRIA 900X300X100 HD ² , GRANITEX, ONYX BLACK	SF	3821	81.38	19.22	1,563.80
PAV	INDUSTRIA 900X300X100 HD ² , POLISHED, ONYX BLACK	SF	3821	81.38	20.02	1,628.90
PAV	INDUSTRIA 900X300X100 HD ² , POLISHED	SF	3821	81.38	20.02	1,628.90
PAV	INDUSTRIA 900X600X100 HD ² , SMOOTH, ONYX BLACK	SF	3839	81.38	15.63	1,272.13
PAV	INDUSTRIA 900X600X100 HD ² , SMOOTH	SF	3839	81.38	16.19	1,317.70
PAV	INDUSTRIA 900X600X100 HD ² , GRANITEX, ONYX BLACK	SF	3839	81.38	19.23	1,565.10
PAV	INDUSTRIA 900X600X100 HD ² , GRANITEX	SF	3839	81.38	19.23	1,565.10
PAV	INDUSTRIA 900X600X100 HD ² , POLISHED	SF	3839	81.38	20.03	1,630.20
PAV	INDUSTRIA 900X600X100 HD ² , POLISHED, ONYX BLACK	SF	3839	81.38	20.03	1,630.20
PAV	INDUSTRIA 900X900X100 HD ² , SMOOTH	SF	2893	61.03	15.66	955.97
PAV	INDUSTRIA 900X900X100 HD ² , SMOOTH, ONYX BLACK	SF	2893	61.03	15.66	955.97
PAV	INDUSTRIA 900X900X100 HD ² , GRANITEX	SF	2893	61.03	19.26	1,175.68
PAV	INDUSTRIA 900X900X100 HD ² , GRANITEX, ONYX BLACK	SF	2893	61.03	19.26	1,175.68
PAV	INDUSTRIA 900X900X100 HD ² , POLISHED, ONYX BLACK	SF	2893	61.03	20.06	1,224.51
PAV	INDUSTRIA 900X900X100 HD ² , POLISHED	SF	2893	61.03	20.06	1,224.51
PAV	INDUSTRIA TRIANGLE HD ² , SMOOTH	SF	3832	81.38	14.78	1,203.12
PAV	INDUSTRIA TRIANGLE HD ² , SMOOTH, ONYX BLACK	SF	3832	81.38	14.22	1,157.55
PAV	INDUSTRIA TRIANGLE HD ² , GRANITEX, ONYX BLACK	SF	3832	81.38	17.82	1,450.52

Type	Product Name	Unit	Pallet Weight	Units per pallet	Unit Price	Pallet Price
PAV	INDUSTRIA TRIANGLE HD ² , GRANITEX	SF	3832	81.38	17.82	1,450.52
PAV	INDUSTRIA TRIANGLE HD ² , POLISHED, ONYX BLACK	SF	3832	81.38	18.62	1,515.62
PAV	INDUSTRIA TRIANGLE HD ² , POLISHED	SF	3832	81.38	18.62	1,515.62
PAV	INDUSTRIA 150X150X100 HD ² , SMOOTH	SF	3357	71.2	14.66	1,043.51
PAV	INDUSTRIA 150X150X100 HD ² , SMOOTH, ONYX BLACK	SF	3357	71.2	14.10	1,003.64
PAV	INDUSTRIA 150X150X100 HD ² , GRANITEX	SF	3357	71.2	17.70	1,259.96
PAV	INDUSTRIA 150X150X100 HD ² , GRANITEX, ONYX BLACK	SF	3357	71.2	17.70	1,259.96
PAV	INDUSTRIA 150X150X100 HD ² , POLISHED	SF	3357	71.2	18.50	1,316.92
PAV	INDUSTRIA 150X150X100 HD ² , POLISHED, ONYX BLACK	SF	3357	71.2	18.50	1,316.92
PAV	INDUSTRIA 200X200X100 HD ² , SMOOTH, ONYX BLACK	SF	2848	60.28	14.11	850.67
PAV	INDUSTRIA 200X200X100 HD ² , SMOOTH	SF	2848	60.28	14.67	884.43
PAV	INDUSTRIA 200X200X100 HD ² , GRANITEX, ONYX BLACK	SF	2848	60.28	17.71	1,067.68
PAV	INDUSTRIA 200X200X100 HD ² , GRANITEX	SF	2848	60.28	16.91	1,019.46
PAV	INDUSTRIA 200X200X100 HD ² , POLISHED	SF	2848	60.28	18.51	1,115.90
PAV	INDUSTRIA 200X200X100 HD ² , POLISHED, ONYX BLACK	SF	2848	60.28	18.51	1,115.90
PAV	INDUSTRIA 200X400X100 HD ² , SMOOTH, ONYX BLACK	SF	2848	60.28	14.11	850.67
PAV	INDUSTRIA 200X400X100 HD ² , SMOOTH	SF	2848	60.28	14.67	884.43
PAV	INDUSTRIA 200X400X100 HD ² , GRANITEX	SF	2848	60.28	17.71	1,067.68
PAV	INDUSTRIA 200X400X100 HD ² , GRANITEX, ONYX BLACK	SF	2848	60.28	17.71	1,067.68
PAV	INDUSTRIA 200X400X100 HD ² , POLISHED	SF	2848	60.28	18.51	1,115.90
PAV	INDUSTRIA 200X400X100 HD ² , POLISHED, ONYX BLACK	SF	2848	60.28	18.51	1,115.90
PAV	INDUSTRIA 450X100X100 HD ² , SMOOTH, ONYX BLACK	SF	3516	74.59	14.10	1,051.42
PAV	INDUSTRIA 450X100X100 HD ² , SMOOTH	SF	3516	74.59	14.66	1,093.19
PAV	INDUSTRIA 450X100X100 HD ² , GRANITEX	SF	3516	74.59	17.70	1,319.94
PAV	INDUSTRIA 450X100X100 HD ² , GRANITEX, ONYX BLACK	SF	3516	74.59	17.70	1,319.94
PAV	INDUSTRIA 450X100X100 HD ² , POLISHED	SF	3516	74.59	18.50	1,379.62
PAV	INDUSTRIA 450X100X100 HD ² , POLISHED, ONYX BLACK	SF	3516	74.59	18.50	1,379.62
PAV	INDUSTRIA 450X150X100 HD ² , SMOOTH, ONYX BLACK	SF	3357	71.2	14.10	1,003.64
PAV	INDUSTRIA 450X150X100 HD ² , SMOOTH	SF	3357	71.2	14.66	1,043.51
PAV	INDUSTRIA 450X150X100 HD ² , GRANITEX	SF	3357	71.2	17.70	1,259.96
PAV	INDUSTRIA 450X150X100 HD ² , GRANITEX, ONYX BLACK	SF	3357	71.2	17.70	1,259.96
PAV	INDUSTRIA 450X150X100 HD ² , POLISHED	SF	3357	71.2	18.50	1,316.92
PAV	INDUSTRIA 450X150X100 HD ² , POLISHED, ONYX BLACK	SF	3357	71.2	18.50	1,316.92
PAV	INDUSTRIA 450X300X100 HD ² , SMOOTH, ONYX BLACK	SF	2883	61.03	14.10	860.28
PAV	INDUSTRIA 450X300X100 HD ² , SMOOTH	SF	2883	61.03	14.66	894.46
PAV	INDUSTRIA 450X300X100 HD ² , GRANITEX	SF	2883	61.03	17.70	1,079.99
PAV	INDUSTRIA 450X300X100 HD ² , GRANITEX, ONYX BLACK	SF	2883	61.03	17.70	1,079.99
PAV	INDUSTRIA 450X300X100 HD ² , POLISHED	SF	2883	61.03	18.50	1,128.81
PAV	INDUSTRIA 450X300X100 HD ² , POLISHED, ONYX BLACK	SF	2883	61.03	18.50	1,128.81
PAV	INDUSTRIA 600X100X100 HD ² , SMOOTH, ONYX BLACK	SF	2145	45.21	15.66	708.17
PAV	INDUSTRIA 600X100X100 HD ² , SMOOTH	SF	2145	45.21	16.22	733.49
PAV	INDUSTRIA 600X100X100 HD ² , GRANITEX	SF	2145	45.21	19.26	870.93
PAV	INDUSTRIA 600X100X100 HD ² , GRANITEX, ONYX BLACK	SF	2145	45.21	19.26	870.93
PAV	INDUSTRIA 600X100X100 HD ² , POLISHED	SF	2145	45.21	20.06	907.09
PAV	INDUSTRIA 600X100X100 HD ² , POLISHED, ONYX BLACK	SF	2145	45.21	20.06	907.09
PAV	INDUSTRIA 600X200X100 HD ² , SMOOTH	SF	2145	45.21	15.66	708.17
PAV	INDUSTRIA 600X200X100 HD ² , SMOOTH, ONYX BLACK	SF	2145	45.21	15.66	708.17
PAV	INDUSTRIA 600X200X100 HD ² , GRANITEX	SF	2145	45.21	19.26	870.93
PAV	INDUSTRIA 600X200X100 HD ² , GRANITEX, ONYX BLACK	SF	2145	45.21	19.26	870.93
PAV	INDUSTRIA 600X200X100 HD ² , POLISHED, GREYED NICKEL	SF	2145	45.21	20.06	907.09
PAV	INDUSTRIA 600X200X100 HD ² , POLISHED, ONYX BLACK	SF	2145	45.21	20.06	907.09

Type	Product Name	Unit	Pallet Weight	Units per pallet	Unit Price	Pallet Price
PAV	INDUSTRIA 600X300X100 HD ² , SMOOTH, ONYX BLACK	SF	2567	54.25	15.66	849.77
PAV	INDUSTRIA 600X300X100 HD ² , SMOOTH	SF	2567	54.25	16.22	880.15
PAV	INDUSTRIA 600X300X100 HD ² , GRANITEX	SF	2567	54.25	19.26	1,045.07
PAV	INDUSTRIA 600X300X100 HD ² , GRANITEX, ONYX BLACK	SF	2567	54.25	19.26	1,045.07
PAV	INDUSTRIA 600X300X100 HD ² , POLISHED	SF	2567	54.25	20.06	1,088.47
PAV	INDUSTRIA 600X300X100 HD ² , POLISHED, ONYX BLACK	SF	2567	54.25	20.06	1,088.47
PAV	INDUSTRIA 600X600X100 HD ² , SMOOTH, ONYX BLACK	SF	2567	54.25	15.66	849.77
PAV	INDUSTRIA 600X600X100 HD ² , SMOOTH	SF	2567	54.25	16.22	880.15
PAV	INDUSTRIA 600X600X100 HD ² , GRANITEX	SF	2567	54.25	19.26	1,045.07
PAV	INDUSTRIA 600X600X100 HD ² , GRANITEX, ONYX BLACK	SF	2567	54.25	19.26	1,045.07
PAV	INDUSTRIA 600X600X100 HD ² , POLISHED	SF	2567	54.25	20.06	1,088.47
PAV	INDUSTRIA 600X600X100 HD ² , POLISHED, ONYX BLACK	SF	2567	54.25	20.06	1,088.47
STP	BOREALIS STEP	PCS	3073	8	165.49	1,323.90
STP	MAYA STEP [4], SLATE	PCS	2780	4	340.14	1,360.58
STP	RAFFINATO STEP [9], SMOOTH	PCS	3236	9	128.45	1,156.03
STP	ROCKA 48" STEP, DOUBLE-SIDED	PCS	2890	8	156.74	1,253.89
STP	ROCKA 60" STEP [6]	PCS	2787	6	211.50	1,269.02
STP	YORK 60" STEP [6]	PCS	2787	6	224.75	1,348.51
STP	BLU 45 MM, CONCRETE OVERLAY, SLATE	SF	2560	127.44	7.07	901.26
STP	BLU 45 MM, CONCRETE OVERLAY, SMOOTH, ONYX BLACK	SF	2560	127.44	7.73	984.86
STP	BLU 45 MM, CONCRETE OVERLAY, SMOOTH	SF	2560	127.44	7.73	984.86
STP	VENETIAN RISER, SLATE	PCS	740	48	11.46	549.89
STP	VENETIAN RISER, SMOOTH	PCS	811	48	12.13	582.14
STP	VENETIAN CAP OVERLAY, SLATE	PCS	1500	48	21.73	1,042.94
STP	VENETIAN CAP OVERLAY, SMOOTH	PCS	1500	48	22.34	1,072.13
CAP	ARCHITECTURAL CAP DOUBLE-SIDED, SPLIT FACE	LF	2390	66	14.26	940.90
CAP	BRANDON CAP, SLATE, ONYX BLACK	PCS	1213	18	21.60	388.80
CAP	BRANDON CAP, SLATE	PCS	1213	18	20.98	377.57
CAP	GRAPHIX CAP, SMOOTH, GREYED NICKEL	PCS	1950	28	30.61	857.02
CAP	GRAPHIX CAP, SMOOTH, ONYX BLACK	PCS	1950	28	30.61	857.02
CAP	PIEDIMONTE WALL & STEP CAP, 14X30, KLEANBLOC, ONYX BLACK	LF	1840	60	25.71	1,542.72
CAP	PIEDIMONTE WALL & STEP CAP, 14X30, KLEANBLOC	LF	1840	60	25.71	1,542.72
CAP	RAFFINATO 90 CAP, 14X28, SMOOTH	PCS	2783	24	41.97	1,007.23
CAP	RAFFINATO 90 CAP, 14X28, SMOOTH, ONYX BLACK	PCS	2783	24	41.97	1,007.23
CAP	RAFFINATO 60 CAP, 14X28, SMOOTH, ONYX BLACK	PCS	1869	24	39.52	948.48
CAP	RAFFINATO 60 CAP, 14X28, SMOOTH	PCS	1869	24	39.52	948.48
CAP	RAFFINATO 60 CAP HD ² , 14X32, SMOOTH, ONYX BLACK	PCS	2150	24	48.66	1,167.74
CAP	RAFFINATO 60 CAP HD ² , 14X32, SMOOTH	PCS	2150	24	48.66	1,167.74
CAP	TRAVERTINA RAW CAP, 14X28, KLEANBLOC	PCS	1780	24	57.22	1,373.18
CAP	YORK COUNTER TOP, 24X36, KLEANBLOC	PCS	2656	16	272.72	4,363.52
CAP	YORK COUNTER TOP, 24X36, KLEANBLOC, ONYX BLACK	PCS	2656	16	272.72	4,363.52
CAP	YORK WALL CAP, 14X48, KLEANBLOC	LF	1552	48	23.23	1,115.14
CAP	YORK WALL CAP, 14X48, KLEANBLOC, ONYX BLACK	LF	1552	48	23.23	1,115.14
CAP	YORK WALL CAP, KLEANBLOC	LF	1597	48	23.34	1,120.51
CAP	YORK WALL CAP, KLEANBLOC, ONYX BLACK	LF	1597	48	23.34	1,120.51
CAP	BALI TRAVERTINA RAW CAP, KLEANBLOC	PCS	1100	28	31.36	878.08
CAP	BULLNOSE, SMOOTH, ONYX BLACK	PCS	2435	180	7.33	1,319.04
CAP	BULLNOSE, SMOOTH	PCS	2435	180	7.33	1,319.04
CAP	BULLNOSE GRANDE, GRINDED	PCS	891	12	91.01	1,092.10
CAP	PACIFIC CAP, SMOOTH	PCS	2015	420	2.99	1,256.64
CAP	PORTOFINO CAP, DOUBLE-SIDED	LF	1591	50.22	18.42	924.85

Type	Product Name	Unit	Pallet Weight	Units per pallet	Unit Price	Pallet Price
CAP	PIEDIMONTE 28X28, PILLAR CAP [6], KLEANBLOC, ONYX BLACK	PCS	1380	6	281.23	1,687.39
CAP	PIEDIMONTE 28X28, PILLAR CAP [6], KLEANBLOC	PCS	1380	6	281.23	1,687.39
CAP	YORK PILLAR CAP, 28X28 [6], KLEANBLOC	PCS	1620	6	308.61	1,851.65
CAP	YORK PILLAR CAP, 28X28 [6], KLEANBLOC, ONYX BLACK	PCS	1620	6	308.61	1,851.65
CAP	YORK PILLAR CAP, 32X32 [6], KLEANBLOC	PCS	1950	6	322.26	1,933.54
CAP	YORK PILLAR CAP, 32X32 [6], KLEANBLOC, ONYX BLACK	PCS	1950	6	322.26	1,933.54
BOR	AVIGNON, CHISELED	PCS	2750	90	11.15	1,003.68
BOR	BRANDON EDGE, SLATE, ONYX BLACK	LF	3901	140.75	8.27	1,164.28
BOR	BRANDON EDGE, SLATE	LF	3901	140.75	8.27	1,164.28
BOR	PIETRA, SPLIT FACE	LF	1285	96	7.82	751.10
ASB	MANCHESTER FOYER, SMOOTH, Top half	PCS	1958	1	5,291.26	5,291.26
ASB	MANCHESTER FOYER, SMOOTH, Bottom half	PCS	4554	1	7,807.94	7,807.94
ASB	MANCHESTER FOYER, SMOOTH, Left woodbox	PCS	1474	1	2,333.46	2,333.46
ASB	MANCHESTER FOYER, SMOOTH, Right woodbox	PCS	1474	1	2,333.46	2,333.46
ASB	FORNO, OVEN	PCS	900	1	4,615.70	4,615.70
ASB	BRANDON 90MM FIRE PIT, RECTANGLE [NO SLEEVE]	PCS	2205	1	1,327.20	1,327.20
ASB	BRANDON 90MM FIRE PIT, SQUARE [NO SLEEVE]	PCS	2283	1	1,337.22	1,337.22
ASB	PRESCOTT FIREPIT [NO SLEEVE]	PCS	2140	1	1,318.82	1,318.82
ASB	RAFFINATO FIREPIT [NO SLEEVE]	PCS	2550	1	1,371.57	1,371.57
ASB	VALENCIA FIRE PIT [NO SLEEVE]	PCS	1567	80	6.96	556.80
INST	LUMI FIRE BOWL, WARM GREY (CHA)	PCS	450	1	1,969.89	1,969.89
ASB	FIREPIT SLEEVE - VALENCIA	PCS	95	1	549.34	549.34
ASB	FIREPIT SLEEVE - SQUARE	PCS	57	1	727.74	727.74
ASB	FIREPIT SLEEVE - RECTANGLE	PCS	82	1	727.74	727.74
INST	FIREPIT VALENCIA-PUSH BUTTON IGNITION [HPC]	PCS	75	1	1,479.65	1,479.65
INST	FIREPIT RAFFINATO/BRANDON RECTANG-PUSH BUTTON IGNITI	PCS	75	1	1,500.03	1,500.03
INST	FIREPIT PRESCOTT SQUARE-PUSH BUTTON IGNITION [HPC]	PCS	75	1	1,480.32	1,480.32
INST	FIREPIT BRANDON SQUARE-PUSH BUTTON IGNITION [HPC]	PCS	75	1	1,480.32	1,480.32
INST	ZENTRO ROUND 24" SMOKELESS FIRE PIT WITH LID - STEEL	PCS	220	1	1,082.14	1,082.14
INST	ZENTRO SQUARE 24" SMOKELESS FIRE PIT WITH LID - STEEL	PCS	260	1	1,302.74	1,302.74

Ed's Concrete Steps

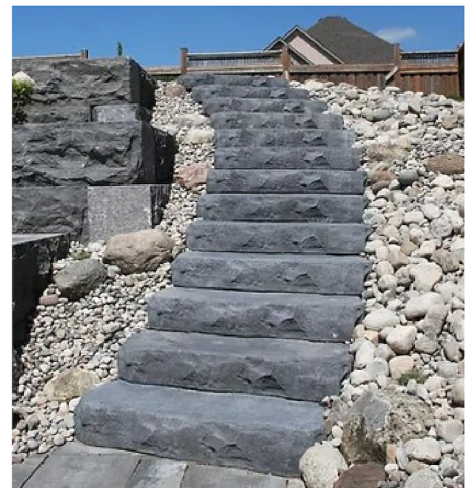
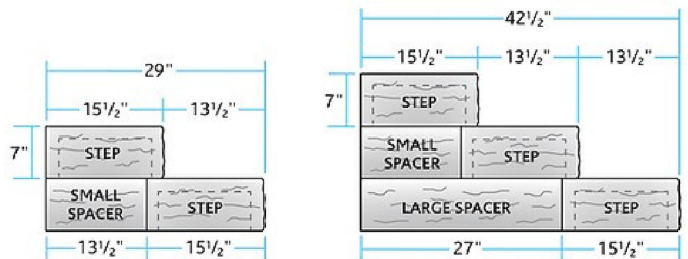
Step:	Dimensions:	Steps/Pallet:	Price/Each:
3' Canyon (Hollow)	3' x 16" x 7"	6 / 1140 lbs.	\$105.12
4' Canyon (Hollow)	4' x 15.5" x 7"	6 / 1440 lbs.	\$120.96
4' Chisel (Hollow)	4' x 13.25" x 7.5"	12 / 2280 lbs.	\$134.72
4' Chisel (Hollow)	4' x 25" x 7.5"	6 / 1920 lbs.	\$162.88
Random (Solid)	40" x 30" x 5.5"	3 / 1260 lbs.	\$140.80

Available Colors: Sunset Buff & Ebony



Canyon Step Spacers

Dimensions:	Price/Each:
4.5" x 13.5" x 7"	\$19.36
4.5" x 27" x 7"	\$28.00



Note: Prices are subject to change without notice.

PRODUCT NAME	ITEM CODE	SOLD BY UOM	AMT PER UOM Qty Unit	2024 RETAIL
SLABS / PAVERS				
Dimensional Flagstone 98 sf. BLUESTONE - Plt	p.blu.df.p	pallet	98 sf	\$ 10.64 sf
Dimensional Flagstone 98 sf. FOND DU LAC - Plt	p.fdl.df.p	pallet	98 sf	\$ 9.90 sf
Dimensional Flagstone 98 sf. LIMESTONE - Plt	p.lime.df.p	pallet	98 sf	\$ 9.90 sf
Dimensional Flagstone 98 sf. SLATE GRAY - Plt	p.sg.df.p	pallet	98 sf	\$ 9.90 sf
Arcadi *NEW		pallet	81.8 sf	\$ 14.77 sf
Gauge Select 105 sf. BLUESTONE - Plt	p.blu.gs.p	pallet	105 sf	\$ 14.77 sf
Gauge Select 105 sf. CHARCOAL - Plt	p.c.gs.p	pallet	105 sf	\$ 14.77 sf
Gauge Select 105 sf. DUNE - Plt	p.dune.gs.p	pallet	105 sf	\$ 14.77 sf
Gauge Select 105 sf. SUMMIT - Plt	p.sum.gs.p	pallet	105 sf	\$ 14.77 sf
Grand Flagstone 90 sf. FOND DU LAC - Plt	p.fdl.gf.p	pallet	90 sf	\$ 9.90 sf
Grand Flagstone 90 sf. LIMESTONE - Plt	p.lime.gf.p	pallet	90 sf	\$ 9.90 sf
Grand Flagstone 90 sf. SLATE GRAY - Plt	p.sg.gf.p	pallet	90 sf	\$ 9.90 sf
Mid Century 108 sf. BLUESTONE - Plt	p.blu.mc.p	pallet	108 sf	\$ 14.77 sf
Mid Century 108 sf. CHARCOAL - Plt	p.c.mc.p	pallet	108 sf	\$ 14.77 sf
Mid Century 108 sf. DUNE - Plt	p.dune.mc.p	pallet	108 sf	\$ 14.77 sf
Mid Century 108 sf. SUMMIT - Plt	p.sum.mc.p	pallet	108 sf	\$ 14.77 sf
Montrose Slab 8 pcs. 98 sf. BLUESTONE - Plt	p.blu.montrose.p	pallet	98 sf	\$ 14.77 sf
Montrose Slab 8 pcs. 98 sf. CHARCOAL - Plt	p.c.montrose.p	pallet	98 sf	\$ 14.77 sf
Montrose Slab 8 pcs. 98 sf. DUNE - Plt	p.dune.montrose.p	pallet	98 sf	\$ 14.77 sf
Montrose Slab 8 pcs. 98 sf. SUMMIT - Plt	p.sum.montrose.p	pallet	98 sf	\$ 14.77 sf
Tetra Natural Cleft *NEW		pallet	150 sf	\$ 14.77 sf
Tetra Thermal *NEW		pallet	150 sf	\$ 14.77 sf
WALLS				
Belvedere Corner 24 sf. FOND DU LAC - Plt	w.fdl.belvcrn.p	pallet	24 sf	\$ 24.09 sf
Belvedere Corner 24 sf. LIMESTONE - Plt	w.lime.belvcrn.p	pallet	24 sf	\$ 24.09 sf
Belvedere Corner 24 sf. SLATE GRAY - Plt	w.sg.belvcrn.p	pallet	24 sf	\$ 24.09 sf
Belvedere Wall 27 sf. FOND DU LAC - Plt	w.fdl.belv.p	pallet	27 sf	\$ 24.09 sf
Belvedere Wall 27 sf. LIMESTONE - Plt	w.lime.belv.p	pallet	27 sf	\$ 24.09 sf
Belvedere Wall 27 sf. SLATE GRAY - Plt	w.sg.belv.p	pallet	27 sf	\$ 24.09 sf
Dimensional Wall Straight 75 pcs. FOND DU LAC - Plt	w.fdl.dimstr.p	pallet	75 ea	\$ 7.76 ea
Dimensional Wall Straight 75 pcs. LIMESTONE - Plt	w.lime.dimstr.p	pallet	75 ea	\$ 7.76 ea
Dimensional Wall Straight 75 pcs. SLATE GRAY - Plt	w.sg.dimstr.p	pallet	75 ea	\$ 7.76 ea
Grand Ledge Corner 20.5 sf. FOND DU LAC - Plt	w.fdl.ledgeCRN.p	pallet	20.5 sf	\$ 40.76 sf
Grand Ledge Corner 20.5 sf. LIMESTONE - Plt	w.lime.ledgeCRN.p	pallet	20.5 sf	\$ 40.76 sf
Grand Ledge Corner 20.5 sf. SLATE GRAY - Plt	w.sg.ledgeCRN.p	pallet	20.5 sf	\$ 40.76 sf
Grand Ledge Wall 18 sf. FOND DU LAC - Plt *ADD \$1 Galv. Hooks	w.fdl.ledge.p	pallet	18 sf	\$ 40.76 sf
Grand Ledge Wall 18 sf. LIMESTONE - Plt *ADD \$1 Galv. Hooks	w.lime.ledge.p	pallet	18 sf	\$ 40.76 sf
Grand Ledge Wall 18 sf. SLATE GRAY - Plt *ADD \$1 Galv. Hooks	w.sg.ledge.p	pallet	18 sf	\$ 40.76 sf
Heartwood Wall *NEW		pallet	26.25 sf	\$ 28.30 sf

Note: Prices are subject to change without notice.

PRODUCT NAME	ITEM CODE	SOLD BY UOM	AMT PER UOM Qty Unit	2024 RETAIL
Kodah Corner 31.5 sf. FOND DU LAC - Plt	w.fdl.kodahcrn.p	pallet	31.5 sf	\$ 28.30 sf
Kodah Corner 31.5 sf. LIMESTONE - Plt	w.lime.kodahcrn.p	pallet	31.5 sf	\$ 28.30 sf
Kodah Corner 31.5 sf. SLATE GRAY - Plt	w.sg.kodahcrn.p	pallet	31.5 sf	\$ 28.30 sf
Kodah Wall 21 sf. FOND DU LAC - Plt	w.fdl.kodah.p	pallet	21 sf	\$ 28.30 sf
Kodah Wall 21 sf. LIMESTONE - Plt	w.lime.kodah.p	pallet	21 sf	\$ 28.30 sf
Kodah Wall 21 sf. SLATE GRAY - Plt	w.sg.kodah.p	pallet	21 sf	\$ 28.30 sf
Outcropping 12" Corner 19.5 sf. FOND DU LAC - Plt	w.fdl.oc12.p	pallet	19.5 sf	\$ 38.28 sf
Outcropping 12" Corner 19.5 sf. LAKESHORE BLEND - Plt	w.lsb.oc12.p	pallet	19.5 sf	\$ 38.28 sf
Outcropping 12" Corner 19.5 sf. LIMESTONE - Plt	w.lime.oc12.p	pallet	19.5 sf	\$ 38.28 sf
Outcropping 12" Corner 19.5 sf. SLATE GRAY - Plt	w.sg.oc12.p	pallet	19.5 sf	\$ 38.28 sf
Outcropping 6" Corner 11 sf. FOND DU LAC - Plt	w.fdl.oc6.p	pallet	11 sf	\$ 38.28 sf
Outcropping 6" Corner 11 sf. LAKESHORE BLEND - Plt	w.lsb.oc6.p	pallet	11 sf	\$ 38.28 sf
Outcropping 6" Corner 11 sf. LIMESTONE - Plt	w.lime.oc6.p	pallet	11 sf	\$ 38.28 sf
Outcropping 6" Corner 11 sf. SLATE GRAY - Plt	w.sg.oc6.p	pallet	11 sf	\$ 38.28 sf
Outcropping A 18 sf. FOND DU LAC - Plt	w.fdl.oca.p	pallet	18 sf	\$ 37.87 sf
Outcropping A 18 sf. LAKESHORE BLEND - Plt	w.lsb.oca.p	pallet	18 sf	\$ 37.87 sf
Outcropping A 18 sf. LIMESTONE - Plt	w.lime.oca.p	pallet	18 sf	\$ 37.87 sf
Outcropping A 18 sf. SLATE GRAY - Plt	w.sg.oca.p	pallet	18 sf	\$ 37.87 sf
Outcropping B 18 sf. FOND DU LAC - Plt	w.fdl.ocb.p	pallet	18 sf	\$ 37.87 sf
Outcropping B 18 sf. LAKESHORE BLEND - Plt	w.lsb.ocb.p	pallet	18 sf	\$ 37.87 sf
Outcropping B 18 sf. LIMESTONE - Plt	w.lime.ocb.p	pallet	18 sf	\$ 37.87 sf
Outcropping B 18 sf. SLATE GRAY - Plt	w.sg.ocb.p	pallet	18 sf	\$ 37.87 sf
Outcropping C 18 sf. FOND DU LAC - Plt	w.fdl.occ.p	pallet	18 sf	\$ 37.87 sf
Outcropping C 18 sf. LAKESHORE BLEND - Plt	w.lsb.occ.p	pallet	18 sf	\$ 37.87 sf
Outcropping C 18 sf. LIMESTONE - Plt	w.lime.occ.p	pallet	18 sf	\$ 37.87 sf
Outcropping C 18 sf. SLATE GRAY - Plt	w.sg.occ.p	pallet	18 sf	\$ 37.87 sf
Outcropping FS D 11 sf. FOND DU LAC - Plt	w.fdl.ocd.p	pallet	11 sf	\$ 48.68 sf
Outcropping FS D 11 sf. LAKESHORE BLEND - Plt	w.lsb.ocd.p	pallet	11 sf	\$ 48.68 sf
Outcropping FS D 11 sf. LIMESTONE - Plt	w.lime.ocd.p	pallet	11 sf	\$ 48.68 sf
Outcropping FS D 11 sf. SLATE GRAY - Plt	w.sg.ocd.p	pallet	11 sf	\$ 48.68 sf
Outcropping FS E 10.5 sf. FOND DU LAC - Plt	w.fdl.oce.p	pallet	10.5 sf	\$ 48.68 sf
Outcropping FS E 10.5 sf. LAKESHORE BLEND - Plt	w.lsb.oce.p	pallet	10.5 sf	\$ 48.68 sf
Outcropping FS E 10.5 sf. LIMESTONE - Plt	w.lime.oce.p	pallet	10.5 sf	\$ 48.68 sf
Outcropping FS E 10.5 sf. SLATE GRAY - Plt	w.sg.oce.p	pallet	10.5 sf	\$ 48.68 sf
Lift Device Outcropping	a.liftOC.e	each	1 ea	\$ 1,650.00 ea
STEPS / STEPPERS				
6' Irregular Steps 3/pallet FOND DU LAC - Plt	s.fdl.irr6.p	pallet	3 ea	\$ 226.05 ea
6' Irregular Steps 3/pallet LIMESTONE - Plt	s.lime.irr6.p	pallet	3 ea	\$ 226.05 ea
6' Irregular Steps 3/pallet SLATE GRAY - Plt	s.sg.irr6.p	pallet	3 ea	\$ 226.05 ea
7" Irregular Steps 8/pallet FOND DU LAC - Plt	s.fdl.irr.p	pallet	8 ea	\$ 176.55 ea
7" Irregular Steps 8/pallet LIMESTONE - Plt	s.lime.irr.p	pallet	8 ea	\$ 176.55 ea
7" Irregular Steps 8/pallet SLATE GRAY - Plt	s.sg.irr.p	pallet	8 ea	\$ 176.55 ea

Note: Prices are subject to change without notice.

PRODUCT NAME	ITEM CODE	SOLD BY UOM	AMT PER UOM Qty Unit	2024 RETAIL
Dimensional 3x18 Steps 8/pallet FOND DU LAC - Plt	s.fdl.dim318.p	pallet	8 ea	\$ 130.35 ea
Dimensional 3x18 Steps 8/pallet LIMESTONE - Plt	s.lime.dim318.p	pallet	8 ea	\$ 130.35 ea
Dimensional 3x18 Steps 8/pallet SLATE GRAY - Plt	s.sg.dim318.p	pallet	8 ea	\$ 130.35 ea
Dimensional 4x18 Steps 8/pallet FOND DU LAC - Plt	s.fdl.dim418.p	pallet	8 ea	\$ 154.28 ea
Dimensional 4x18 Steps 8/pallet LIMESTONE - Plt	s.lime.dim418.p	pallet	8 ea	\$ 154.28 ea
Dimensional 4x18 Steps 8/pallet SLATE GRAY - Plt	s.sg.dim418.p	pallet	8 ea	\$ 154.28 ea
Dimensional 4x24 Steps 4/pallet FOND DU LAC - Plt	s.fdl.dim424.p	pallet	4 ea	\$ 176.55 ea
Dimensional 4x24 Steps 4/pallet LIMESTONE - Plt	s.lime.dim424.p	pallet	4 ea	\$ 176.55 ea
Dimensional 4x24 Steps 4/pallet SLATE GRAY - Plt	s.sg.dim424.p	pallet	4 ea	\$ 176.55 ea
Dimensional 6x30 Steps 3/pallet FOND DU LAC - Plt	s.fdl.dim630.p	pallet	3 ea	\$ 226.05 ea
Dimensional 6x30 Steps 3/pallet LIMESTONE - Plt	s.lime.dim630.p	pallet	3 ea	\$ 226.05 ea
Dimensional 6x30 Steps 3/pallet SLATE GRAY - Plt	s.sg.dim630.p	pallet	3 ea	\$ 226.05 ea
Empire 3x18 Steps 8/pallet FOND DU LAC - Plt	s.fdl.emp318.p	pallet	8 ea	\$ 130.35 ea
Empire 3x18 Steps 8/pallet LIMESTONE - Plt	s.lime.emp318.p	pallet	8 ea	\$ 130.35 ea
Empire 3x18 Steps 8/pallet SLATE GRAY - Plt	s.sg.emp318.p	pallet	8 ea	\$ 130.35 ea
Empire 4x21 Steps 6/pallet FOND DU LAC - Plt	s.fdl.emp421.p	pallet	6 ea	\$ 164.18 ea
Empire 4x21 Steps 6/pallet LIMESTONE - Plt	s.lime.emp421.p	pallet	6 ea	\$ 164.18 ea
Empire 4x21 Steps 6/pallet SLATE GRAY - Plt	s.sg.emp421.P	pallet	6 ea	\$ 164.18 ea
Empire 5x24 Steps 4/pallet FOND DU LAC - Plt	s.fdl.emp524.p	pallet	4 ea	\$ 198.83 ea
Empire 5x24 Steps 4/pallet LIMESTONE - Plt	s.lime.emp524.p	pallet	4 ea	\$ 198.83 ea
Empire 5x24 Steps 4/pallet SLATE GRAY - Plt	s.sg.emp524.p	pallet	4 ea	\$ 198.83 ea
Empire 6x30 Steps 4/pallet - Plt *NEW		pallet	5 ea	\$ 226.05 ea
Superior Steppers 16/pallet FOND DU LAC - Plt	p.fdl.stepper.p	pallet	16 ea	\$ 36.55 ea
Superior Steppers 16/pallet LIMESTONE - Plt	p.lime.stepper.p	pallet	16 ea	\$ 36.55 ea
Superior Steppers 16/pallet SLATE GRAY - Plt	p.sg.stepper.p	pallet	16 ea	\$ 36.55 ea
COPING / CAPS				
24x24 Column Cap 10/pallet LIMESTONE - Plt	c.lime.dim24.p	pallet	10 ea	\$ 106.43 ea
24x24 Column Cap 10/pallet SLATE GRAY - Plt	c.sg.dim24.p	pallet	10 ea	\$ 106.43 ea
24x24 Column Cap 10/pallet SUPERIOR BUFF - Plt	c.buff.dim24.p	pallet	10 ea	\$ 106.43 ea
27x27 Belvedere Column Cap 10/pallet FOND DU LAC - Plt	c.fdl.belv27.p	pallet	10 ea	\$ 116.33 ea
27x27 Belvedere Column Cap 10/pallet LIMESTONE - Plt	c.lime.belv27.p	pallet	10 ea	\$ 116.33 ea
27x27 Belvedere Column Cap 10/pallet SLATE GRAY - Plt	c.sg.belv27.p	pallet	10 ea	\$ 116.33 ea
30x30 Column Cap 6/pallet LIMESTONE - Plt	c.lime.dim30.p	pallet	6 ea	\$ 141.90 ea
30x30 Column Cap 6/pallet SLATE GRAY - Plt	c.sg.dim30.p	pallet	6 ea	\$ 141.90 ea
30x30 Column Cap 6/pallet SUPERIOR BUFF - Plt	c.buff.dim30.p	pallet	6 ea	\$ 141.90 ea
34x34 Column Cap 6/pallet LIMESTONE - Plt	c.lime.dim34.p	pallet	6 ea	\$ 168.30 ea
34x34 Column Cap 6/pallet SLATE GRAY - Plt	c.sg.dim34.p	pallet	6 ea	\$ 168.30 ea
34x34 Column Cap 6/pallet SUPERIOR BUFF - Plt	c.buff.dim34.p	pallet	6 ea	\$ 168.30 ea
Belvedere Coping 66 lf. FOND DU LAC - Plt	c.fdl.belvcop.p	pallet	66 lf	\$ 12.62 lf
Belvedere Coping 66 lf. LIMESTONE - Plt	c.lime.belvcop.p	pallet	66 lf	\$ 12.62 lf
Belvedere Coping 66 lf. SLATE GRAY - Plt	c.sg.belvcop.p	pallet	66 lf	\$ 12.62 lf
Dimensional Coping 63 lf. LIMESTONE - Plt	c.lime.dimcop.p	pallet	63 lf	\$ 14.03 lf
Dimensional Coping 63 lf. SLATE GRAY - Plt	c.sg.dimcop.p	pallet	63 lf	\$ 14.03 lf
Dimensional Coping 63 lf. SUPERIOR BUFF - Plt	c.buff.dimcop.p	pallet	63 lf	\$ 14.03 lf

Note: Prices are subject to change without notice.

PRODUCT NAME	ITEM CODE	SOLD BY UOM	AMT PER UOM Qty Unit	2024 RETAIL
FIRE FEATURES				
Belvedere Fire Pit FOND DU LAC - Pit	f.fdl.belvFP.p	pallet	1 ea	\$ 981.75 ea
Belvedere Fire Pit LIMESTONE - Pit	f.lime.belvFP.p	pallet	1 ea	\$ 981.75 ea
Belvedere Fire Pit SLATE GRAY - Pit	f.sg.belvFP.p	pallet	1 ea	\$ 981.75 ea
Belvedere Fire Pit Smokeless FOND DU LAC - Pit	f.fdl.belvFPsmkls.p	pallet	1 ea	\$ 1,955.25 ea
Belvedere Fire Pit Smokeless LIMESTONE - Pit	f.lime.belvFPsmkls.p	pallet	1 ea	\$ 1,955.25 ea
Belvedere Fire Pit Smokeless SLATE GRAY - Pit	f.sg.belvFPsmkls.p	pallet	1 ea	\$ 1,955.25 ea
Belvedere Gas Fire Pit FOND DU LAC - Pit	f.fdl.belvFPgas.p	pallet	1 ea	\$ 2,640.00 ea
Belvedere Gas Fire Pit LIMESTONE - Pit	f.lime.belvFPgas.p	pallet	1 ea	\$ 2,640.00 ea
Belvedere Gas Fire Pit SLATE GRAY - Pit	f.sg.belvFPgas.p	pallet	1 ea	\$ 2,640.00 ea
Dimensional Fire Pit FOND DU LAC - Pit	f.fdl.dimFP.p	pallet	1 ea	\$ 684.75 ea
Dimensional Fire Pit LIMESTONE - Pit	f.lime.dimFP.p	pallet	1 ea	\$ 684.75 ea
Dimensional Fire Pit SLATE GRAY - Pit	f.sg.dimFP.p	pallet	1 ea	\$ 684.75 ea
Dimensional Fire Pit Smokeless FOND DU LAC - Pit	f.fdl.dimFPsmkls.p	pallet	1 ea	\$ 1,699.50 ea
Dimensional Fire Pit Smokeless LIMESTONE - Pit	f.lime.dimFPsmkls.p	pallet	1 ea	\$ 1,699.50 ea
Dimensional Fire Pit Smokeless SLATE GRAY - Pit	f.sg.dimFPsmkls.p	pallet	1 ea	\$ 1,699.50 ea
Dimensional Gas Fire Pit FOND DU LAC - Pit	f.fdl.dimFPgas.p	pallet	1 ea	\$ 2,095.50 ea
Dimensional Gas Fire Pit LIMESTONE - Pit	f.lime.dimFPgas.p	pallet	1 ea	\$ 2,095.50 ea
Dimensional Gas Fire Pit SLATE GRAY - Pit	f.sg.dimFPgas.p	pallet	1 ea	\$ 2,095.50 ea
Kodah Fire Pit FOND DU LAC - Pit	f.fdl.kodahFP.p	pallet	1 ea	\$ 990.00 ea
Kodah Fire Pit LIMESTONE - Pit	f.lime.kodahFP.p	pallet	1 ea	\$ 990.00 ea
Kodah Fire Pit SLATE GRAY - Pit	f.sg.kodahFP.p	pallet	1 ea	\$ 990.00 ea
Kodah Fire Pit Smokeless FOND DU LAC - Pit	f.fdl.kodahFPsmkls.p	pallet	1 ea	\$ 2,384.25 ea
Kodah Fire Pit Smokeless LIMESTONE - Pit	f.lime.kodahFPsmkls.p	pallet	1 ea	\$ 2,384.25 ea
Kodah Fire Pit Smokeless SLATE GRAY - Pit	f.sg.kodahFPsmkls.p	pallet	1 ea	\$ 2,384.25 ea
Kodah Gas Fire Pit FOND DU LAC - Pit	f.fdl.kodahFPgas.p	pallet	1 ea	\$ 1,914.00 ea
Kodah Gas Fire Pit LIMESTONE - Pit	f.lime.kodahFPgas.p	pallet	1 ea	\$ 1,914.00 ea
Kodah Gas Fire Pit SLATE GRAY - Pit	f.sg.kodahFPgas.p	pallet	1 ea	\$ 1,914.00 ea
Breeo Smokeless Fire Pit Liner ROUND w/ Lid - Ea	f.smkls.rfpl.e	each	1 ea	\$ 2,033.31 ea
Breeo Smokeless Fire Pit Liner SQUARE W/ Lid - Ea	f.smkls.sfpl.e	each	1 ea	\$ 1,762.68 ea
Steel Fire Pit Ring - Ea	f.roundring	each	1 ea	\$ 371.25 ea
Steel Square Fire Pit Liner - Ea	f.sqliner	each	1 ea	\$ 371.25 ea



Delivery

Hardscape

Gravel

Bark

0-10 Miles	\$124.00	0-5 Miles	\$114.00	0-5 Miles	\$84.00
11 – 20 Miles	\$158.00	6-10 Miles	\$124.00	6-10 Miles	\$94.00
21-30 Miles	\$192.00	11-15 Miles	\$148.00	11-15 Miles	\$118.00
31-40 Miles	\$236.00	16-20 Miles	\$158.00	16-20 Miles	\$128.00
41-50 Miles	\$280.00	21-25 Miles	\$192.00	21-25 Miles	\$162.00
51-60 Miles	\$324.00	26-30 Miles	\$212.00	26-30 Miles	\$182.00
61-70 Miles	\$388.00	31-35 Miles	\$256.00	31-35 Miles	\$226.00
71-80 Miles	\$452.00	36-40 Miles	\$286.00	36-40 miles	\$256.00
81-90 Miles	\$516.00	41-45 Miles	\$330.00	41-45 Miles	\$300.00
91-100 Miles	\$580.00	46-50 Miles	\$374.00	46-50 Miles	\$330.00
101-110 Miles	\$644.00	51-55 Miles	\$418.00	51-55 Miles	\$374.00

Hardscape: Any palletized product or gravel bins.

- Gravel bins hold up to 2 tons of material per bin.
- There is a \$20.00 bin charge in addition to the cost of the material.

Gravel: Decorative Stone, Sand & Gravel, and Oversized Stone

- The dump trucks have a maximum capacity of 13 tons. No Minimum.

Bark: Landscape Bark

- The dump trucks have a maximum capacity of 15 yards. 1 yard Minimum.

